

www.sfsmartenergy.co.tz



SF SMART ENERGY

Company Profile

*Empower lives through sustainable, affordable
and innovative energy solutions*



SF SMART ENERGY

We empower lives through **sustainable, affordable and innovative energy solutions**. Our comprehensive solutions meet countless market demands, providing Utility companies the tools to forge the future of energy generation and management in a digitalized World. Building a sustainable offering for a better life is our dedication, **SF Smart Energy makes it easy to use energy and water resources**

i ABOUT US

SF Smart Energy Limited is a Tanzania-based company principally engaged in assembling and distributions of electric metering products. The company's products and services include Single Phase Smart Energy Meters, Three Phase Smart Energy Meters, DCU Meters, Submeters, Water and Gas Meters. So far the company has successfully distributed its products in Tanzania, Congo DRC, Rwanda, Zanzibar and Nigeria.



SF SMART ENERGY IN A GLANCE

- Established Since 2019
- Leading Energy and Water Meter Intergrated Solutions Provider
- One of the Tanzania's largest supplier of Smart Meter and overall Solutions
- Subsidiary of SF Group of Companies

WHO IS SF GROUP OF COMPANIES

- Established Since 2007
- 18 Subsidiary companies in various industries and business sectors across Africa.
- Manage different business opportunities accross Sub Saharan Africa
- Provide services, products and innovative solutions.



OUR MISSION

- Provide competitive metering and solutions
- Focus on challenges and pressure of customers
- Continue to create maximum value for customers
- Establish long term cooperation relationship with valued customer by attentive service and reliable products



OUR VISION

To Empower lives through sustainable, affordable and innovative energy solutions

By using our smart metering solutions, we are helping utility companies all over Africa to improve their efficiency, lower operating costs and provide better customer service. With a focus on quality, reliability, and innovation we are committed to support our customers to master their digital transformation journey.



OUR CORE VALUES

Quality: We shall always endeavor to provide the best quality of work to our esteemed clients

Reliability: We shall always do what we say and get the job done whatever it takes

Proactive: We shall take full responsibility for our actions, take control, bring solutions and make things happen

Pragmatic: We are realistic and shall take a practical approach based on our collective knowledge and experience

Efficiency: We shall ensure all of our resources are being efficiently utilized at all times

Innovation: We shall always question the status quo and find smarter and better ways to do things everyday

Teamwork: We are one family. We work together to achieve our goals and we support all team members

Integrity: We shall be honest and shall maintain strong moral principles at all times

Customer Care: We are dedicated to our customers. We respect, listen, understand and serve our customers

Sustainability: We respect our environment and we are aware it is today we are creating the future. We build our business on sustainable practices



OUR **PILLARS**

Our platform is tailored for the needs of emerging markets by focusing on 4 pillars



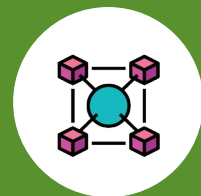
End-to-End Solution

SF Smart Energy caters to all the utility's needs by providing a comprehensive platform that addresses all aspects of the utility distribution process



Innovative pricing models

We are pioneering a smart-meter-as-a-service solution that reduces the upfront cost of deployment, operation, and maintenance of smart metering solutions into a single recurring fee per meter



Interoperability

Our solution is meter agnostic, allowing utilities to leapfrog from fragmented legacy infrastructures to a seamless modern solution

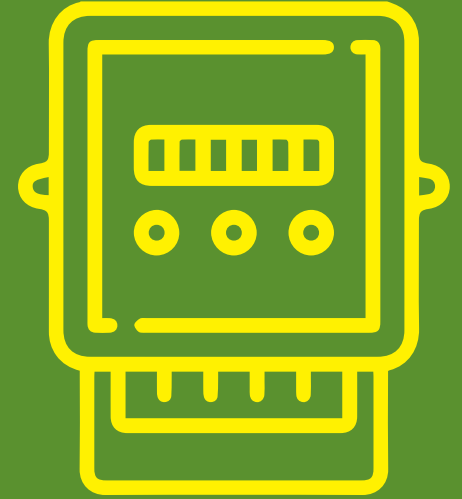


Sustainability

SF Smart Energy is committed to fostering water usage and revenue collection efficiency

Focus on
Utility Companies

Our Products



Smart Electricity Metering

01



GSD7666

Single Phase Smart Keypad Prepayment Meter

GSD7666 is a smart single phase meter with keypad for commercial and residential application, which fulfill the international STS and STS 2.0 standard, IEC standard and DLMS protocol.

Perfection design with plug-play module. It provides maximum flexibility as follows:

- Easy to register the existing and new developed vending
- Implement various prepay with different account and tariff
- Different communication choices for application scenario
- Cover all interoperability demand
- Support remote operation and control switchable STS and CTS

02



GST7666

Three Phase Smart Keypad Prepayment Meter

GST7666 is a smart single phase meter with keypad for commercial and residential application, which fulfill the international STS and STS 2.0 standard, IEC standard and DLMS protocol.

Perfection design with plug-play module. It provides maximum flexibility as follows:

- Easy to register the existing and new developed vending
- Implement various prepay with different account and tariff
- Different communication choices for application scenario
- Cover all interoperability demand
- Support remote operation and control switchable STS and CTS

03



UNP112

Single Phase
Smart Meter

- 220v/230v/240v, 5 (100)A, 50/60Hz
- Compliance with IEC 62052-11, IEC 62053-21(Class 1), IEC 62053-23(Class 2), IEC 62055-41 Edition 2
- Intergrated standard layout keypad
- DLMS/COSEM and STS certificated
- Multiple I/O
- Large data memory storage
- Upgradeable
- Plug and play communication module
- Switch between prepaid mode and postpaid mode
- WAN: Plug and play
2G/CAT1+2G/3G/CAT4/4G/G3
-PLC/BPLC/HPLC/RF replaceable communication module

04



UNP234

Three Phase
Smart Meter

- 220v/230v/240v, 5 (100)A, 50/60Hz
- Compliance with IEC 62052-11, IEC 62053-21(Class 1), IEC 62053-23(Class 2), IEC 62055-41
- Intergrated standard layout keypad
- DLMS/COSEM and STS certificated
- Multiple I/O
- Large data memory storage
- Upgradeable
- Plug and play communication module
- Switch between prepaid mode and postpaid mode
- WAN: Plug and play
2G/CAT1+2G/3G/CAT4/4G/G3
-PLC/BPLC/HPLC/RF replaceable communication module

05



READY BOARD

A Ready Board is a small gadget used to distribute power in a small building of two rooms or less. Since no wiring is needed, extension cables are used to supply power from the gadget to places where power is needed. When using Ready Board, one does not need electrical wiring in the property, therefore can save wiring cost

Ready Board is basically a set of the following items:
Main Switch: for switching power supply on or off.
Circuit Breaker: for disconnecting supply in the event of a short circuit.
Earth Leakage System: for safety in case of leakages. One large lamp for lighting the room where Ready Board is installed
Three Switch Socket: Left Hand Side Switch Socket: For connecting extension cable to heavy power appliances such as cookers.
Middle Switch Socket: For connecting extension cable to medium power appliances such as a iron
Right Hand Side Switch Socket: For connecting extension cable to light power appliances such as radio, TV set, fans etc.

06



UNDC12

DIN Rail Smart Single phase meter

- 220v/230v/240v, 5 (100)A, 50/60Hz
- Compliance with IEC 62052-11, IEC 62053-21(Class 1), IEC 62053-23(Class 2), IEC 62055-41
- DLMS/COSEM and STS certificated
- Intergrated standard layout keypad
- Multiple I/O
- Large data memory storage
- Upgradeable
- DIN-Rail mounted
- Switch between prepaid mode and postpaid mode
- WAN: Optical G3-PLC, BPLC, HPLC or RF Module
- UIU Port: Option PLC, RF, M-Bus communication to UIU

07



UNDC300

Data Concentrator

- UNDC300 Data concentrator is a distributed meter reading and controlling unit in AMI system, to schedule pulling data from metering devices and store data in internal FLASH and push the data to HES according to task schedule

Main Functions:

- Uplink communication with HES/MDM system
- Downlink communication with meter
- Act as gateway between HES/MDM system and meter

- Schedule task reading of meters
- Meter management

Key Features:

- 3x230/400V, 50/60Hz
- Connect and Manage up to 1000 metres
- Plug and play communication module
- Support to work in client/server module
- Status indicator via LED
- Multiple I/O
- Large data memory storage
- Uplink: 2G/CAT1+2G/3G/CAT4/4G
- Downlink: G3-PLC/BPLC/HPLC/RF

Smart Metering Solution

WAN: LoraWAN/GPRS/3G/4G/NB-IoT
Sigfox Network

LAN: PLC/BPLC/RF Mesh/RS485

Meter Station (MDC & MDM)



AMI Solution



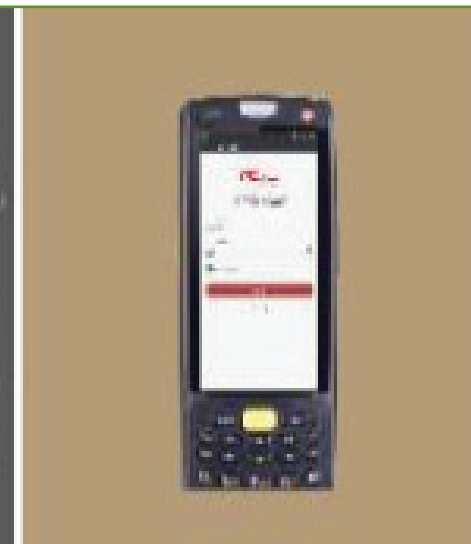
Prepaid Solution



Cascade Connection Metering Solution



C & I Metering Solution

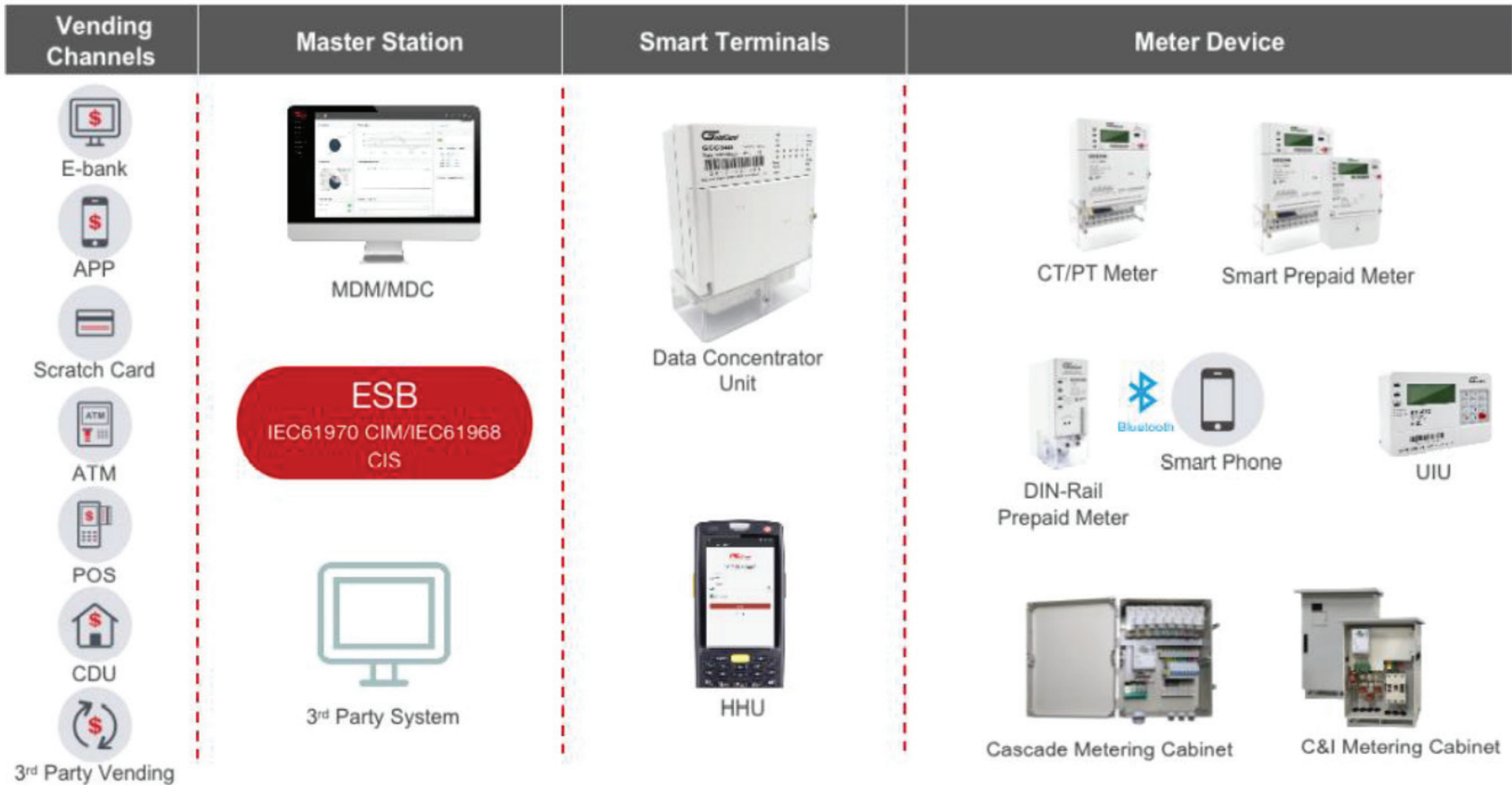


FDM & APP



Intergrated Energy Management Solution

The Architecture of smart metering



Smart water Metering

01



SMART STS PREPAID

Multi-Jet (Brass)

Main Functions:

- Recharge locally via CIU or online via mobile phone
- Pre-programmable low credit warning
- Automatically shut off value once tamper or fraud occur
- Emergency water (overdraft)
- Pre-programmable social amount (monthly fee consumption)
- Non-switch off during holidays, weekends & off-duty time
- Data auto-save when battery off
- 10 years' monthly consumption data record

Key Features:

- STS (Standard Transfer Specification) IEC62055-41, 51 compliant
- Support LoRa RF radio frequency communication
- AES/3DES Encryption to ensure the data security
- Support the meter with Multi-jet (Brass) or Volumetric (Plastic)
- Anti-external magnetic interference

02



BLUETOOTH STS PREPAID

Multi-Jet (Brass)

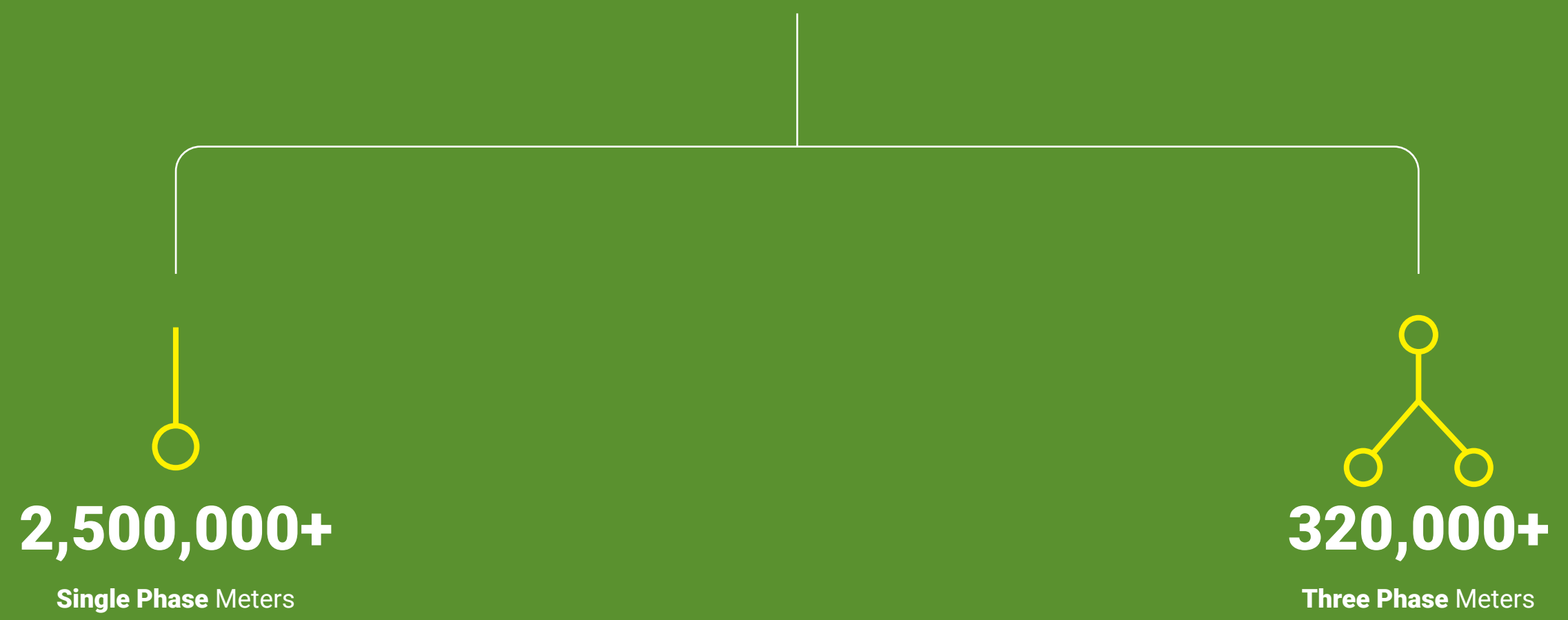
Main Functions:

- Recharge locally via CIU or online via mobile phone
- Pre-programmable low credit warning
- Automatically shut off value once tamper or fraud occur
- Emergency water (overdraft)
- Pre-programmable social amount (monthly fee consumption)
- Non-switch off during holidays, weekends & off-duty time
- Data auto-save when battery off
- 10 years' monthly consumption data record

Key Features:

- STS (Standard Transfer Specification) IEC62055-41, 51 compliant
- AES/3DES Encryption to ensure the data security
- Bluetooth communication between meter and smart phone or CTU
- Support the meter with Multi-jet (Brass) or Volumetric (Plastic)
- Anti-external magnetic interference

Production Capability





SF SMART ENERGY



Our Infrastructures and facilities

We are equipped with modern machines for testing and calibrations



Calibrator



Laser Making Machine



Calibration on and Verification



High Voltage testing

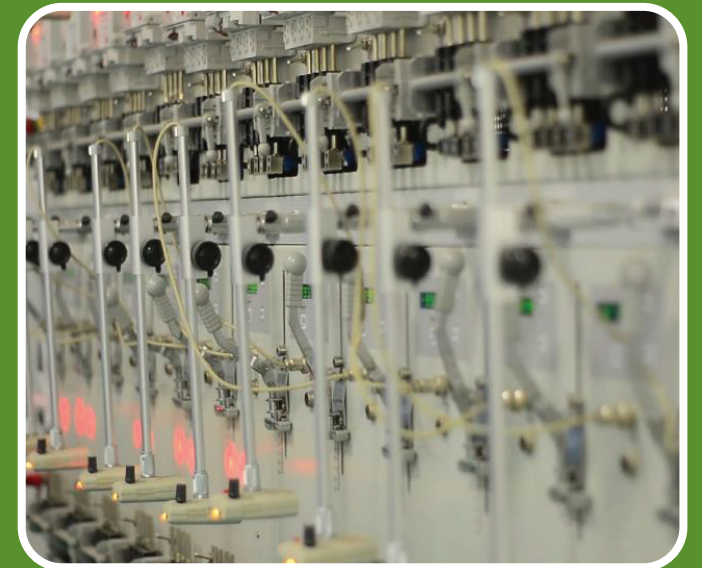
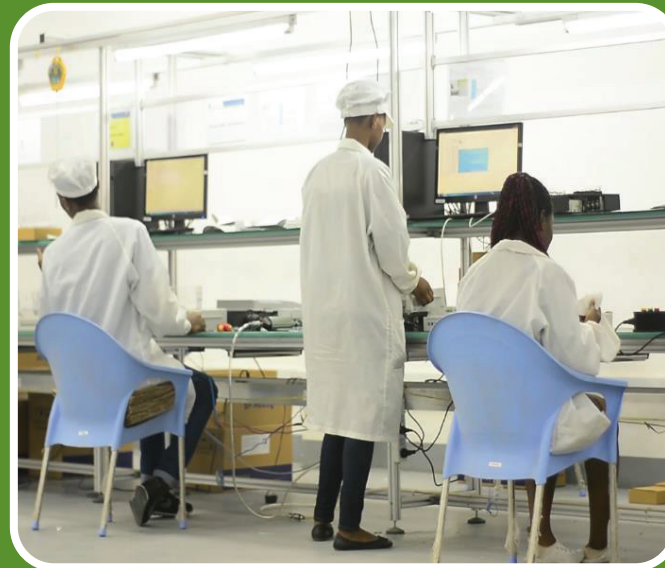


Parameter setting



Accuracy checking

Our Production workshop



Our International Outreach



Join our **exciting Future**

We are committed to be Africa leader in IoT electricity metering, driving demand with innovation and service, and driving efficient use of resources with the value of accurate metering technology

We are determined to engage in the design, R&D and manufacture of IoT electricity meters, and integrated energy management system. SF Smart Energy always adheres to be an independent innovation, independent research and development, and to self-develop all product source codes. we will build an ecosystem of Internet of things





Why SF Smart Energy

- We possess comprehensive integrated **smart metering solution**, and also do service support to every customer
- We establish **long-term partnership** with the customer, and help them solve the problems during their deployment, accompanied by the customer's growth
- We make great efforts for the customers and help them to realize **value optimization**



SF SMART ENERGY

 www.sfsmartenergy.co.tz



SF Smart Energy Limited,
Plot NO 75-79, Tegeta Industrial Area,
P. O. Box 63314, Dar es Salaam
Mobile: +255 76 680 9265,
Telephone: +255 22 240 0646
Email: info@sfsmartenergy.co.tz



SF Group of Companies
Headquarters Airtel House,
Morocco Square-Dar es Salaam
Telephone+255 22 240 0646
Website: www.sfgroup.co.tz
Email: info@sfgroup.co.tz